



The integration of public participation in EIA to inform governmental decision-making

Karl Fuller

Principal Environmental Project Manager

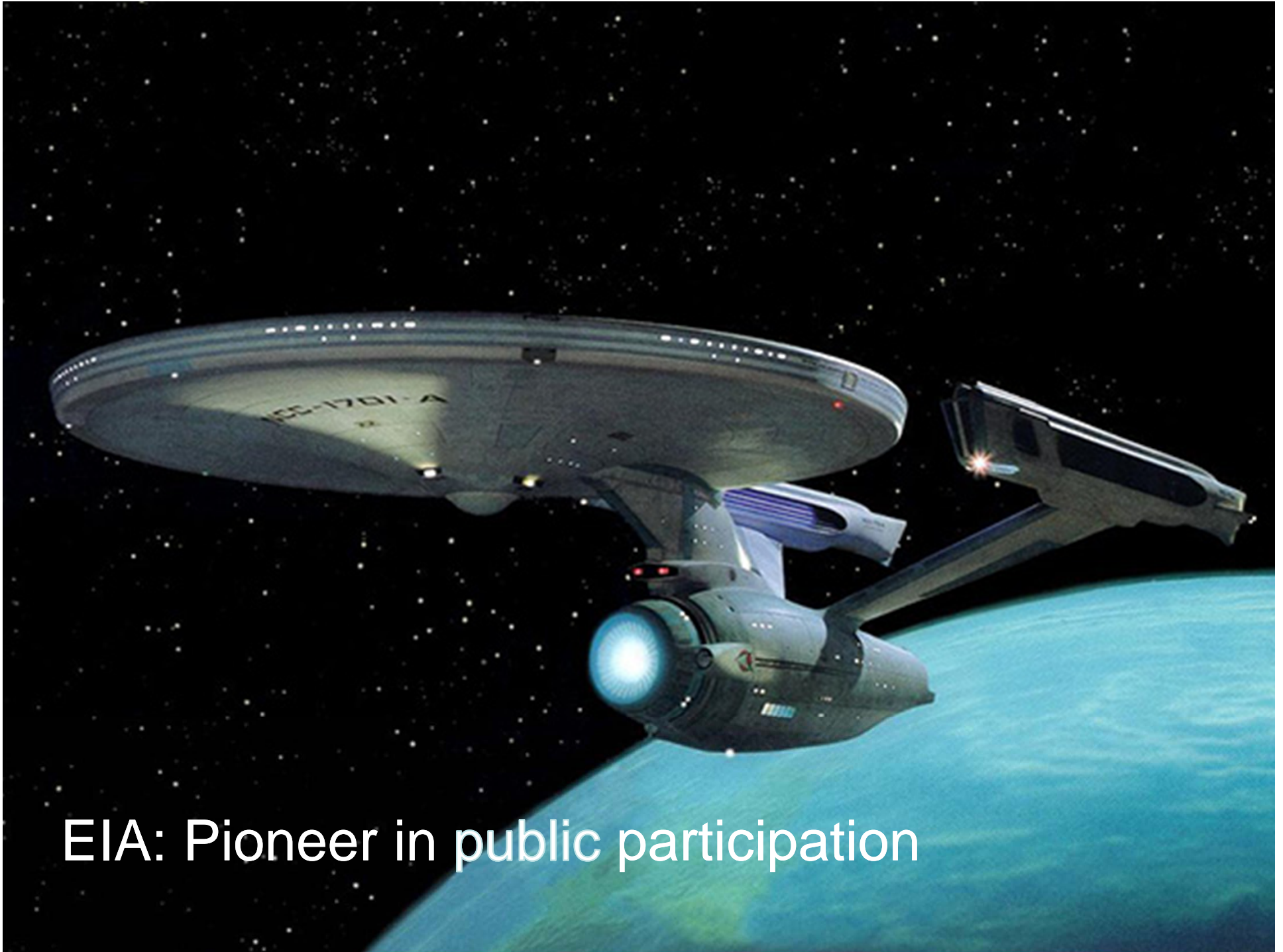
National Environmental Assessment Service

Public participation

- ➔ Public participation in EU law
- ➔ Context for public participation
- ➔ Experience of public participation on major infrastructure in the UK
- ➔ Case studies – what worked and why?
- ➔ Conclusions

Public participation in EU law

- ⇒ Article 4 publish screening decision
- ⇒ Article 6 publish ES and requires early and effective consultation when all options are open and before decision is taken (Aarhus)
- ⇒ Article 7 refers to transboundary effects consultation
- ⇒ Article 9 requires the publication of the decision with:
 - ⇒ Any conditions attached
 - ⇒ Main reasons for decision including reference to public participation
 - ⇒ Main mitigation measures



EIA: Pioneer in public participation





twitter

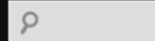


You **Tube**



Save the Weir!

Help us save Northmoor Weir!



[Home](#) [About](#) [Flood Protection](#) [Health&Safety](#) [Heritage Aspects](#) [Waste of Public Money](#) [Collected Resources](#)

[Gallery](#)

Update

Posted on [May 14, 2012](#)

Dear Everyone,

As you know the Northmoor Weir Campaign Team has been working with the Environment Agency concerning the issues surrounding Northmoor Weir and new conversations will begin this week. I am sure you also know that the Agency had been worried that their lock keepers risked straining themselves to remove 'paddles' that allow the water of the river Thames through a weir at Northmoor in times of flood. As many of

Welcome to the main website of
Save Northmoor Weir Campaign!

MAKE A DIFFERENCE

Save Northmoor Weir
Campaign

Sign Petition

442 people signed

Petition by iPetitions.com







2008 Planning Act

- Act set out a duty to consult the local community
- Prepare a statement on how they propose to consult
- Talk to the local authority before preparing statement
- Statement must be made available to public and advertised in local paper
- Consultation must be carried out as set in statement
- Developer has a duty to take account of responses to consultation

Models of participation

Decide

Announce

Defend



Engage

Deliberate

Decide



Hampshire waste management



- Area 38,000 ha
- 1.5 million population
- 80% rural
- Limited opportunities for landfill
- Ageing incinerators
- Proximity principle applies
- 400,000 tonnes/pa energy from waste plant proposed for Portsmouth

Revised approach

- ➔ Returned to waste management strategy
- ➔ Relaunched public consultation programme
- ➔ Set up 3 community advisory forums
 - ➔ to provide a sounding-board
 - ➔ to identify issues of concern about different waste management options and the most appropriate options for Hampshire;
 - ➔ to provide feedback on the proposed range of options for communicating information to the general public.
- ➔ Applied more traditional techniques in parallel

Outcomes

- ➔ Much greater emphasis on recycling
- ➔ Composting and anaerobic digestion to be considered to reduce waste volumes
- ➔ 3 EfW plants to be constructed
- ➔ Landfill agreed as the least preferred option.

Shaldon and Ringmore Tidal Defence Scheme



Communicating the problem



- ➔ Liaison groups involving 25 volunteers
- ➔ Regular meetings to assist in project design
- ➔ Independent facilitator
- ➔ Seeking consensus

Deben Estuary



Lessons we can learn

- ⇒ do not underestimate the ability of people to handle complex and technical information;
- ⇒ ensure that **all** of the options and all of the 'pros and cons' are open for discussion;
- ⇒ ensure that people understand the decision-making processes which they cannot control and influence but which affect the outcome;
- ⇒ ensure that people have opportunities to discuss rather than just to listen;
- ⇒ offer a range of levels of involvement;

Other lessons

- ➔ Good practice appears to be born out of adversity
- ➔ The experts are not always 'right'
- ➔ Focus on the objective, not the 'how'

Conclusions

- ➔ We need to get better at understanding where a more proactive approach is required
- ➔ Need to encourage a more systematic move from DAD to EDD
- ➔ EDD means making engagement part of project planning & part of iterative EIA
- ➔ Need a willingness to hand some control over to communities, engage on the problems not just solutions.